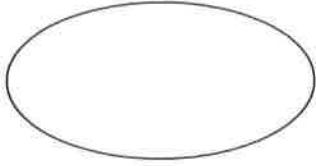


# Mitosis Notes

Name \_\_\_\_\_

\_\_\_\_\_ occurs in a series of stages, or \_\_\_\_\_.

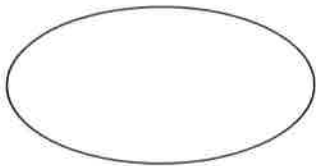
**1st:** \_\_\_\_\_



- Chromosomes are \_\_\_\_\_ (# doubles)
- Chromosomes appear as threadlike coils (\_\_\_\_\_) at the start, but each chromosome and its copy (\_\_\_\_\_ chromosome) change to sister chromatids at end of this phase

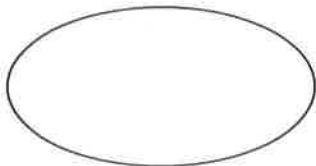


**2nd:** \_\_\_\_\_



- \_\_\_\_\_ begins (cell begins to divide)
- \_\_\_\_\_ (or poles) appear and begin to move to opposite ends of cell
- \_\_\_\_\_ form between the poles

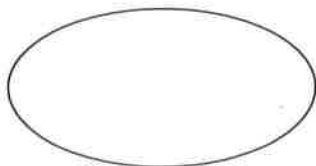
**3rd:** \_\_\_\_\_



- \_\_\_\_\_ (or pairs of chromosomes) attach to the spindle fibers



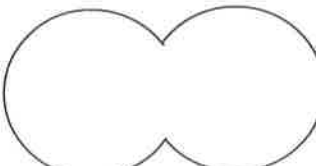
**4th:** \_\_\_\_\_



- Chromatids (or pairs of chromosomes) \_\_\_\_\_ and begin to move to \_\_\_\_\_ ends of the cell

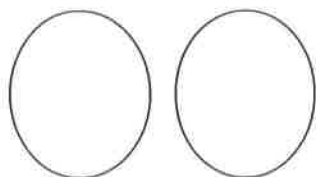


**5th:** \_\_\_\_\_



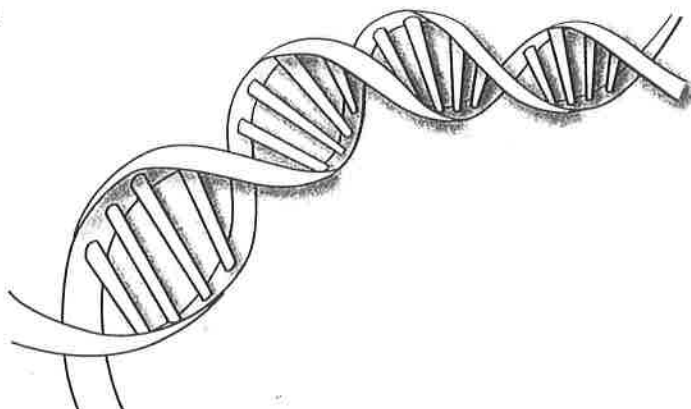
- Two new \_\_\_\_\_ form
- Chromosomes appear as chromatin (\_\_\_\_\_ rather than \_\_\_\_\_)
- \_\_\_\_\_ ends

**6th:** \_\_\_\_\_



- Cell membrane moves inward to create two \_\_\_\_\_ cells - each with its own \_\_\_\_\_ with identical \_\_\_\_\_

# DNA, Genes, and Chromosomes



Four friends were talking about human DNA, genes, and chromosomes. They each had different ideas about where these structures were found. This is what they said.

- Bella:** "I think DNA is found on genes."
- Kyra:** "I think chromosomes are found on genes."
- Kurt:** "I think genes are found on DNA."
- Joan:** "I think chromosomes are found on DNA."

Whom do you agree with the most? \_\_\_\_\_ Explain why you agree.

---

---

---

---

---

---

---