

Name: \_\_\_\_\_  
 Period: \_\_\_\_\_ Date: \_\_\_\_\_  
 Teacher: \_\_\_\_\_

## Cells "R" Us

These drawings show how WE are made of CELLS.

### Directions:

1. Match the correct word from the **WORD LIST** below to the drawings 1-5.
2. Color each drawing the CORRECT color noted under the word.
3. Use your colored drawings and the same words to fill in the blanks for questions 1-10.

**Word List:**  
color to use

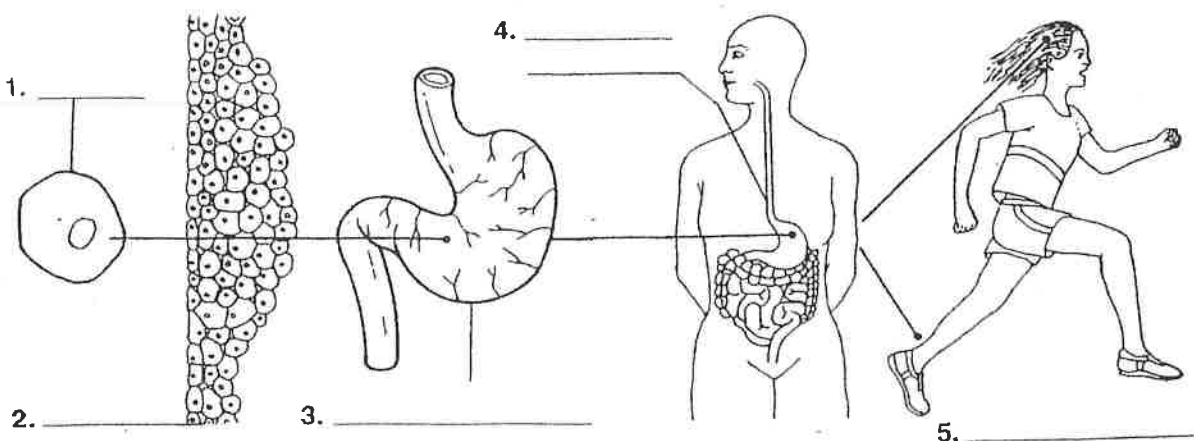
**organism**  
(purple)

**organ system**  
(blue)

**organ**  
(green)

**tissue**  
(yellow)

**cell**  
(red)



1. A \_\_\_\_\_ is the smallest unit of structure and function of a living thing.
2. An example of a **cell** is a \_\_\_\_\_ cell.
3. A **tissue** is made of a group of similar \_\_\_\_\_ working together.
4. An example of a **tissue** is \_\_\_\_\_ tissue.
5. An **organ** is made of different \_\_\_\_\_ working together to do a special job.
6. An example of an **organ** is the \_\_\_\_\_.
7. An **organ system** is made of many \_\_\_\_\_ working together to do a special job.
8. An example of an **organ system** is the \_\_\_\_\_ system.
9. An \_\_\_\_\_ is a living thing that carries out its own life activities.
10. An example of an **organism** is \_\_\_\_\_.

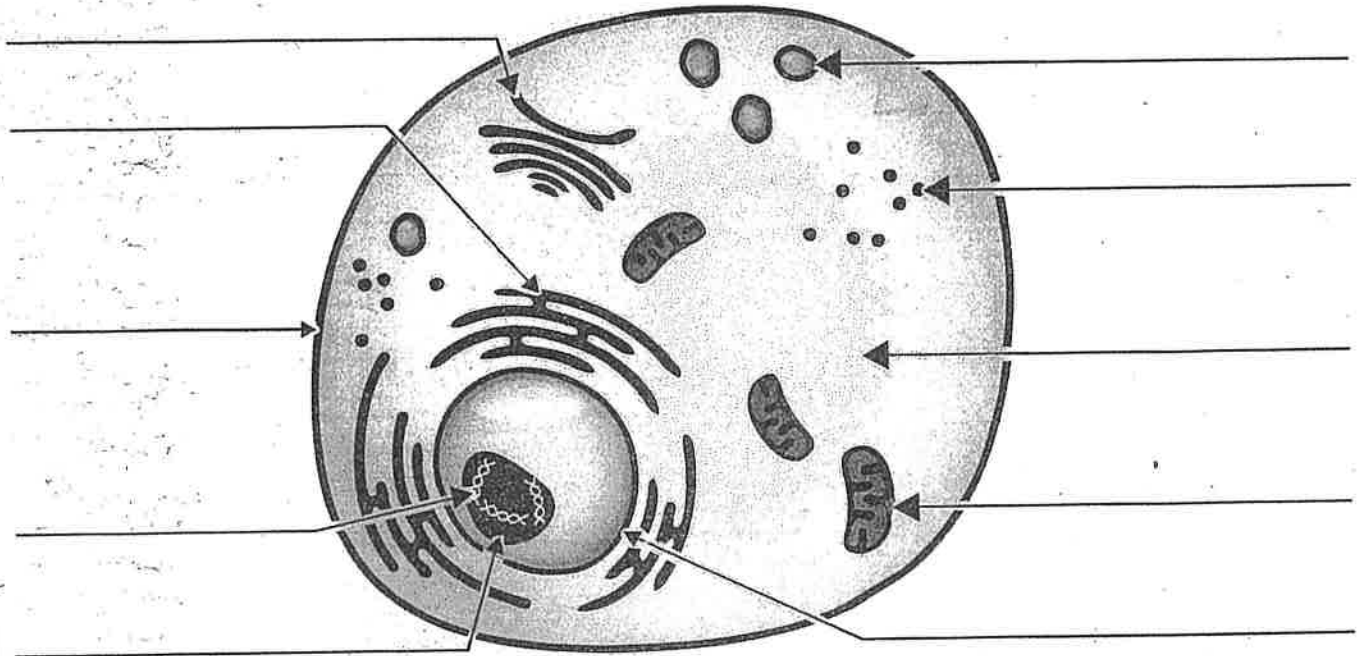
### Challenges:

The largest **organ** in the human body is the \_\_\_\_\_.

Human skin is an example of a \_\_\_\_\_ because \_\_\_\_\_.

# Animal and Plant Cells

Type of Cell: \_\_\_\_\_



Type of Cell: \_\_\_\_\_

